

AMS4000S

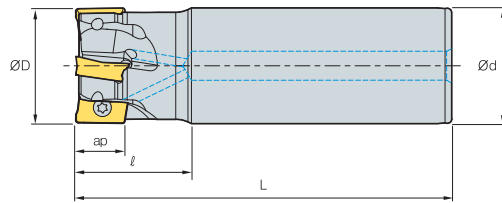


Fig. 1

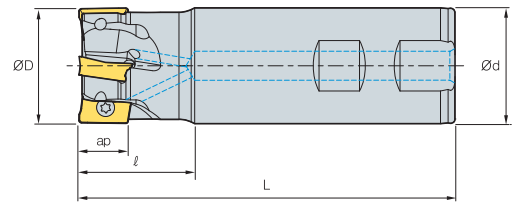


Fig. 2



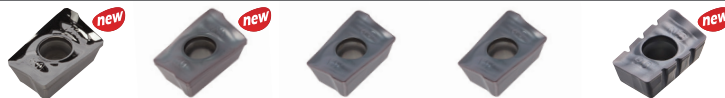
AA 90°
• AR: 7°~13°
• RR: -20°~ -6°

(mm)

Designation		ØD	Ød	ℓ	L	ap		Fig.
AMS 4020HS	1	20	20	30	90	17	0.18	2
4020HS-M	1	20	20	30	160	17	0.17	1
4021HS	1	21	20	30	90	17	0.19	2
4021HS-M	1	21	20	30	160	17	0.34	1
4025HS	2	25	25	40	110	17	0.35	2
4025HS-2M25	2	25	25	40	180	17	0.58	1
4025HS-2L25	2	25	25	40	230	17	0.80	1
4026HS	2	26	25	40	110	17	0.37	2
4026HS-2M25	2	26	25	40	180	17	0.60	1
4026HS-2L25	2	26	25	40	230	17	0.82	1
4032HS	3	32	32	40	125	17	0.65	2
4032HS-2M32	2	32	32	50	200	17	1.17	1
4032HS-2L32	2	32	32	50	260	17	1.50	1
4032HS-3M32	3	32	32	50	200	17	1.10	1
4032HS-3L32	3	32	32	50	260	17	1.48	1
4033HS	3	33	32	40	125	17	0.68	2
4033HS-2M32	2	33	32	50	200	17	1.12	1
4033HS-2L32	2	33	32	50	260	17	1.55	1
4033HS-3M32	3	33	32	50	200	17	1.12	1
4033HS-3L32	3	33	32	50	260	17	1.55	1

Available inserts

APMT-MA APMT-ML APMT-MM APMT-MF APMT-MN



Designation	Coated										Uncoated	page	Designation	Coated										Uncoated	page																		
	Cermet	CN2000	CN30	NCM325	NC5330	NCM635	NCM645	PC2505	PC2010	PC3600				PC3700	PC6510	PC9530	PC9540	PC5300	PC5400	G10	H01	Cermet	CN2000			CN30	NCM325	NC5330	NCM635	NCM645	PC2505	PC2510	PC3600	PC3700	PC6510	PC9530	PC9540	PC5300	PC5400	G10	H01		
APMT 1806PDR-MA													●		APMT 180624PDR-ML																		●	●									
180604PDR-MA													●		180630R-ML																			●	●								
180612PDR-MA													●		1806PDSR-MM				●	●	●	●	●	●	●	●	●	●	●	●	●	●	●	●	●								
180616PDR-MA													●		1806PDSR-MF				●																	●	●						
180620PDR-MA													●		180612PDSR-MM				●																		●	●					
180624PDR-MA													●		180616PDSR-MM				●																			●	●				
180630R-MA													●		180620PDSR-MM																								●	●			
1806PDR-ML													●	●	180624PDSR-MM				●																			●	●				
180604PDR-ML													●	●	180630R-MM																								●	●			
180612PDR-ML													●	●	180632R-MM				●																				●	●			
180616PDR-ML													●	●	1806PDSR-MN3																								●	●			
180620PDR-ML													●	●	1806PDSR-MN4																								●	●			

※ Please purchase 2 types of APMT-MN (nick type) inserts with different chip breakers. ※ Please use the cutters with even teeth.

Parts

Specification		
Ø20~Ø21	FTKA0408	TW15S
Ø25~Ø33	FTKA0410	TW15S

Available inserts E05

